

Available Finishes by



We have five "finishes" in our product line-up:

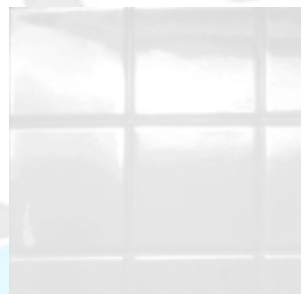
RealTile

RealTile has been the "flag-ship" in Best Bath's product line. Real ceramic tile was used in building the molds, hence the name RealTile. The tile-like 4-inch sections are silky smooth, and the imitation grout lines are deeper than the other Best Bath finishes. The RealTile line-up of models forms the backbone of our remodeler series.



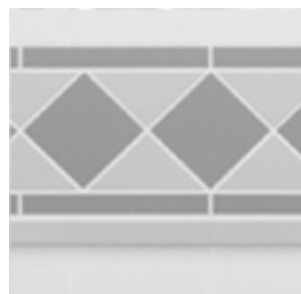
Classic

The classic finish is what many of our customers call the "golf ball" shower walls. Many customers like the dimpling effect in the 4-inch sections. They believe it tends to hide small hard water spots. The classic is used in the ADA, Barrier Free, and American Home lines.



Diamond Finish

One of the newest Best Bath shower finishes, the Diamond Finish is fast becoming our most popular. The tile-like wall sections are 6-inch squares, and the (1) row of full diamonds and bars, and (1) row of half diamonds and bars lends itself to very creative accenting.



Eight Inch finish

Another new line created in recent years, is becoming more and more popular. The larger 8-inch squares have a "luxury aura" about them. They work especially well in larger shower units. They also are less expensive to accent.



Smoothwall

While these units are generally considered "hospital and assisted living" in design, when finished in one of the Safas granites, they are extremely striking in appearance.

